

Catalog

Note: Prices below are for Undecorated Costumes.
Please call us for prices on our custom decorated tutus and tunics.

Romantic Tutus

Romantic Skirt

These skirts have 4 layers of heavily gathered tulle. Hooks and bars are included with an instruction sheet for placement and garment care. Please select your fabric from the [fabric and color chart](#) on our website.

#RTS A This skirt includes a custom sized basque that is lined with coutil and has a grosgrain waistband with elastic insets. The tulle on this skirt begins at the high hip. A.K.A., Neo- Romantic

24", 26", 28", 30", 32", 34", 36" lengths **\$105.00**

#RTS B The tulle on this skirt begins at the waist but utilizes a basque that is placed under the tulle for stability.

24", 26", 28", 30", 32", 34", 36" lengths **\$90.00**

Romantic Gored Skirt

This skirt has 4 layers of heavily gathered tulle. Hooks and bars are included with an instruction sheet for placement and garment care. Please select your fabric from the fabric and color chart on our website.

#RGS The tulle panels on this skirt are cut into triangular sections called "Gores" which are stitched together and gathered. This cut creates an "A" line silhouette. Each layer is stitched to a Basque beginning at the waist.

24", 26", 28", 30", 32", 34", 36" lengths **\$125.00**
Each additional layer of gored tulle **\$20.00**

Romantic Performance Tutu

Our romantic performance tutu includes your choice of 3 skirt styles (see below) and an alterable bodice that is lined with coutil and also includes nude elastic straps. The skirt has 4 layers of heavily gathered tulle. The cut of your bodice is designed to your specifications (see the bodice selection listed on Pg. 5). Hooks and bars are included with an instruction sheet for placement and garment care. Please select your fabric from the [fabric and color chart](#) on our website.

#RPT A This skirt includes a custom sized basque that is lined with coutil and has a grosgrain waistband with elastic insets. The tulle on this skirt begins at the high hip.

24", 26", 28", 30", 32", 34", 36" lengths

#7	7 panel bodice	\$275.00	#7b	7 panel bodice w/ built in basque	\$280.00
#9	9 panel bodice	\$290.00	#9b	9 panel bodice w/ built in basque	\$295.00
#11	11 panel bodice	\$305.00	#11b	11 panel bodice w/ built in basque	\$310.00
#BS	Bustier bodice	\$335.00	#BS b1	Bustier Bodice w/built in basque	\$340.00

Romantic Tutus Cont.

#RPT B The tulle on this skirt begins at the waist. The suggested bodice bases for this tutu are Pointed or Straight.

24", 26", 28", 30", 32", 34", 36" lengths

#7 7 panel bodice **\$260.00**

#9 9 panel bodice **\$275.00**

#11 11 panel bodice **\$290.00**

#RGT The tulle panels on this skirt are cut into triangular sections called "Gores" which are stitched together and gathered. This cut creates an "A" line silhouette. Each layer is stitched to a Basque beginning at the waist.

24", 26", 28", 30", 32", 34", 36" lengths

#7 7 panel bodice **\$305.00**

#9 9 panel bodice **\$320.00**

#11 11 panel bodice **\$335.00**

#BS Bustier bodice **\$335.00**

#7b 7 panel bodice w/ built in basque **\$310.00**

#9b 9 panel bodice w/ built in basque **\$325.00**

#11b 11 panel bodice w/ built in basque **\$340.00**

#BS b1 Bustier Bodice w/built in basque **\$340.00**

Each additional layer of gored tulle **\$20.00**

Custom options for romantic tutus,

Each additional layer of tulle (except gored skirt)	\$15.00
Varying colors of tulle (each layer change)	\$ 10.00
Modesty inset for bodices made of souffel	\$10.50
Power mesh panty	\$20.00
Spiral boning (all bodices)	\$25.00

Classical Tutus

Classical Tutu Travel Bag

Great for transporting your tutus to competitions or guest performances, this Polyester, 46" (approx.) diameter bag is heavy weight, water resistant and holds two tutus. It features an interior center strap that holds your tutu in place so that the bag can be hung over a hanger and an exterior pocket with a hook and loop closure. **#TB Black \$75.00**

Classical Rehearsal Skirt

This classical rehearsal skirt is hooped, hand tacked and has 10 layers of diamond net heavily gathered onto a Nylon power net panty and basque. These skirts are not custom sized, please select from the sizes listed below. Hooks and bars are included with an instruction sheet for placement and garment care. Discounts do not apply.

#CRS Black or White \$160.00 13"&15" net lengths Colors are available, add **\$35.00**

Sizes;	Waist	High Hip	Low hip	Basque depth	Half Girth
A	22" - 23"	27" - 28"	32" - 33"	2.5"	22" - 24"
B	24" - 25"	29" - 30"	34" - 35"	3"	23" - 25"
C	26" - 27"	31" - 32"	36" - 37"	3.5"	24" - 26"
D	28" - 29"	33" - 34"	38" - 39"	4"	25" - 27"
E	30" - 31"	35" - 36"	40" - 41"	4.5"	26" - 28"

Classical Tutu Skirt & Inverted Tutu

This classical skirt is hooped and tacked in your style choice of English (fluffier) or Russian (Pancake). It also includes 10 layers of diamond net, heavily gathered onto a Nylon power net panty. The basque is lined with coutil and has a grosgrain waistband with elastic insets. Hooks and bars are included with an instruction sheet for placement and garment care. Please select your fabric from the [fabric and color chart](#) on our website.

13", 15" net lengths **#CTS & #IT \$210.00** Black or White **\$235.00** Color

Classical Performance Tutu & Inverted Tutu

This classical performance tutu includes an alterable bodice lined with coutil and nude elastic straps. The cut of your bodice is cut to your specifications (**see the bodice selection listed on Pg. 5**). The skirt has the same construction as the classical tutu skirt listed above. Hooks and bars are included with an instruction sheet for placement and garment care. Please select your fabric from the printable [fabric and color chart](#) on our website.

13", 15" lengths **#CPT & #IT**

#7	7 panel bodice	\$450.00	#7b	7 panel bodice w/ built in basque	\$455.00
#9	9 panel bodice	\$465.00	#9b	9 panel bodice w/ built in basque	\$470.00
#11	11 panel bodice	\$480.00	#11b	11 panel bodice w/ built in basque	\$485.00
#BS	Bustier bodice	\$510.00	#BS b1	Bustier Bodice w/built in basque	\$515.00

Bell Tutus

Classical Euro Tutu Skirt & Inverted Bell

This classical euro tutu skirt has 7 layers of diamond net or tulle heavily gathered on to a Nylon stretch net panty. Hand tacking is not included on the tulle skirt. The basque is lined with coutil and has a grosgrain waistband with elastic insets. Hooks and bars are included with an instruction sheet for placement and garment care. Please select your fabric from the printable [fabric and color chart](#) on our website.

14", 16", 18" tulle lengths (no tacking) **#CETST & #IBST \$180.00**
14", 16", 18" net lengths w/ tacking **#CETSN & #IBSN \$215.00**

Classical Performance Euro Tutu & Inverted Bell

Our classical euro tutu includes an alterable bodice lined with coutil and also includes nude elastic straps. The cut of your bodice is constructed to your specifications (**please see following suggestions listed on Pg. 5**). Skirt has the same construction as the classical euro tutu skirt listed above. Hooks and bars are included with an instruction sheet for placement and garment care. Please select from the [fabric and color choices](#) listed on our website.

14", 16", 18" tulle lengths (no tacking) **#CPETT & #IBETT**

#7	7 panel bodice	\$335.00	#7b	7 panel bodice w/ built in basque	\$340.00
#9	9 panel bodice	\$350.00	#9b	9 panel bodice w/ built in basque	\$355.00
#11	11 panel bodice	\$365.00	#11b	11 panel bodice w/ built in basque	\$370.00
#BS	Bustier bodice	\$395.00	#BS b	Bustier Bodice w/built in basque	\$400.00

14", 16", 18" tulle lengths (w/ tacking) **#CPETN & #IBETN**

#7	7 panel bodice	\$370.00	#7b	7 panel bodice w/ built in basque	\$375.00
#9	9 panel bodice	\$385.00	#9b	9 panel bodice w/ built in basque	\$390.00
#11	11 panel bodice	\$400.00	#11b	11 panel bodice w/ built in basque	\$405.00
#BS	Bustier bodice	\$430.00	#BS b	Bustier Bodice w/built in basque	\$435.00

Custom options for classical and Euro tutus,

Varying colors of tulle or net (each layer)	\$ 10.00
Scalloped or dagged net edges on the top 7 layers	\$35.00
Circular top plate (layer)	\$10.00
Panty ruffles	\$20.00
Modesty inset for bodices made of souffel	\$10.50
Spiral boning (all bodices)	\$25.00
Ombre dyed net	\$35.00

Bodices and Sleeves

Our alterable bodices are lined with coutil and include nude elastic straps. These bodices can now be purchased separately. Hooks and bars are included with an instruction sheet for placement and garment care. Please select your fabric from the printable [fabric and color chart](#) on our website.

Base and Panels

Back Shapes

7 Panel Bodice

Pointed Base Straight Base W/ Built in Basque

Scoop Low Scoop



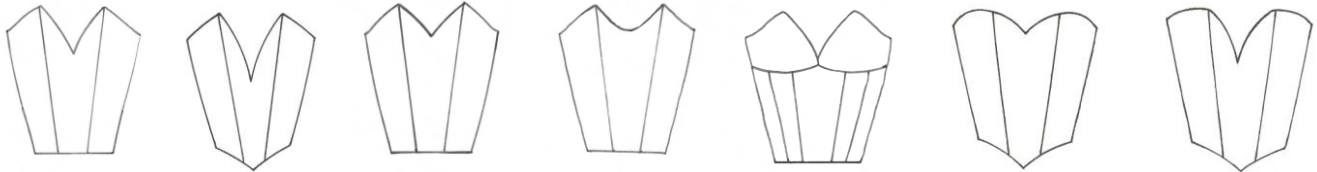
9 & 11 Panel Bodice



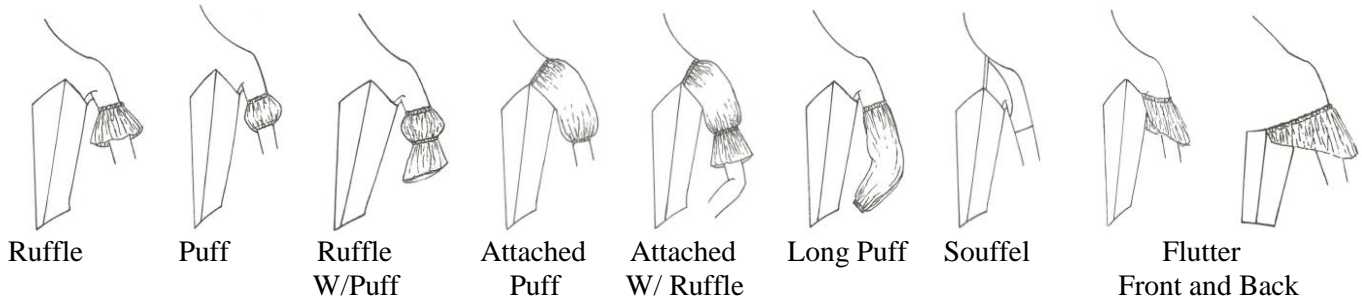
Note: The 11 panel bodice has 6 back panels rather than the 4 back panels as on the 7 & 9 panel bodices.

Necklines

Deep "V" Plunging "V" Modest "V" Scoop Bustier Sweetheart Sweetheart "V"



Sleeves



Prices

Bodices

<i>7 Panel</i>	<i>9 Panel</i>	<i>11 Panel</i>
\$145.00	\$160.00	\$175.00
Bustier	\$180.00	

Sleeves

Ruffle, Puff	\$18.00
Puff W/ Ruffle, Long Puff, Flutter	\$25.00
Attached Puff, W/ Ruffle, Souffel	\$30.00

Custom options for bodices,

Modesty Souffel inset	\$10.50
Spiral boning	\$25.00
Contrast piping on front panel seams	\$10.00-\$20.00

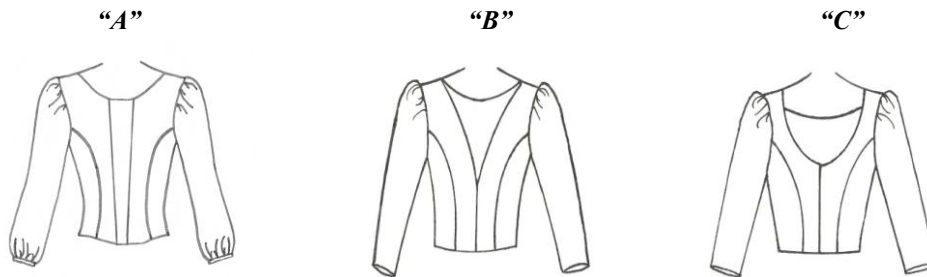
Men's Tunics

Men's undecorated tunics will be made to your specifications. All tunics are lined with twill. All Sleeves are built on a Nylon Lycra facing for ease of movement (except the romantic sleeves.) The following tunics are offered "À la Carte". Please combine our Tunic body style, sleeve, cuff and sleeve cap. All items are sold separately. Please select your fabric from the printable [fabric and color chart](#) on our website.

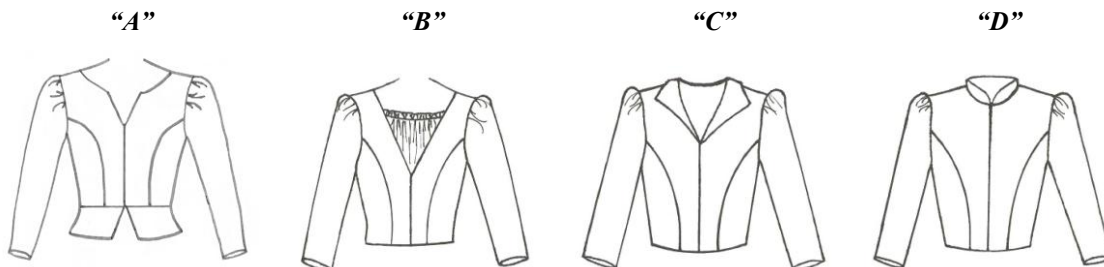
#BT Basic \$125.00



#TCIS Center front inset \$155.00



#CT Classical \$175.00



Men's Tunics Cont.

Sleeves

\$45.00

"A"



"B"



\$70.00 "C"



\$85.00

"D"



"E"



\$110 "F"



Sleeve Caps and Cuffs

\$20.00 Cap



\$25.00 Long Cap



\$20.00 Ruffled Cuff



\$30.00 French Cuff



\$30.00 Military Cuff



Order Information

All orders must be placed by fax or mail and include the order form, worksheet and measurement chart(s). All orders are processed on a first come, first served basis. All payments may be made by check or credit card. When placing your order a minimum deposit of 50% is required with the remaining balance received before your order is shipped, or payment in full is accepted. Please allow 2-8 weeks delivery depending upon the size of your order. Please call for current delivery date's as we may be able to ship earlier than noted.

No changes or cancellations will be permitted once your order is received. As your costumes are custom made, no returns will be accepted. Tutu Etoile stands behind the manufacture of their products under normal wear. In the event of situations beyond our control, Tutu Etoile will not be held responsible for any damages and/or cancellations beyond the moneys paid by the purchaser to Tutu Etoile.

Discounts

5-10 costumes receive 10%, 11 or more receive 15%. Discounted costumes must be ordered in the same style and color. Custom options and rehearsal tutus not included. No discount will be given when deadline is less than 4 weeks. If we are able produce your costumes earlier than 4 weeks we will honor the discount. Discounted orders are to be paid in full when placing your order.

Off Season Discounts

Place your order for "Nutcracker" or build up your stock

10% Discount for 1 – 4 pieces

15% Discount for 5 - 10 pieces

20% Discount for 11+ pieces

1. Discounts apply to undecorated costumes listed on our price list, except Classical Rehearsal Skirts. Options are not included.
2. Delivery time is 2 - 8 weeks (based on the size of your order) from the time your order is received by Tutu Etoile.
3. Orders must be post marked or faxed within the months of April 1 - Aug 1.
4. All orders are to be paid in full at the time the order is placed. Master Card and Visa is accepted.
5. You must complete the order form, worksheet and measurement chart/s when placing your order. Forms can be found on the [Printable Catalog and Order Forms](#) page on our website.